

The idea behind taking a break from *trashfinding* was that if the probability wave swung negative, I could be finding very evil, ugly, dangerous or smelly waste. I found a zero crossing and jumped out there. But of course I am still not un-plagued by evil, for it exists in the world.

As noted here in the 90s TIMARA logo, a sine wavelet can be representative of the quantized states of inspiration, no matter what your field. There is a peak of *trashfinding*, followed by a depressed state, which is a natural cycle.



This sine wave is generated by the machinery of TIMARA, notably the internal combustion engine (driving to Elyria), and good jams on the stereo, a willingness to go as deep as the landscape can take me. Thus producing the potential to *trashfind* such pieces as the diorama.

Using the machinery of TIMARA, Technology in Music and Related Arts, I was able to find something quite spectacular, but there is a danger that I could then find something quite diabolical, using this same machinery. You need to know when to "hop out" of the machinery.



Peter B, *trashfinder* "Diorama from Elyria"

NEW SOUNDS FROM OBERLIN
11"x13"x29", Wood

Trash Night

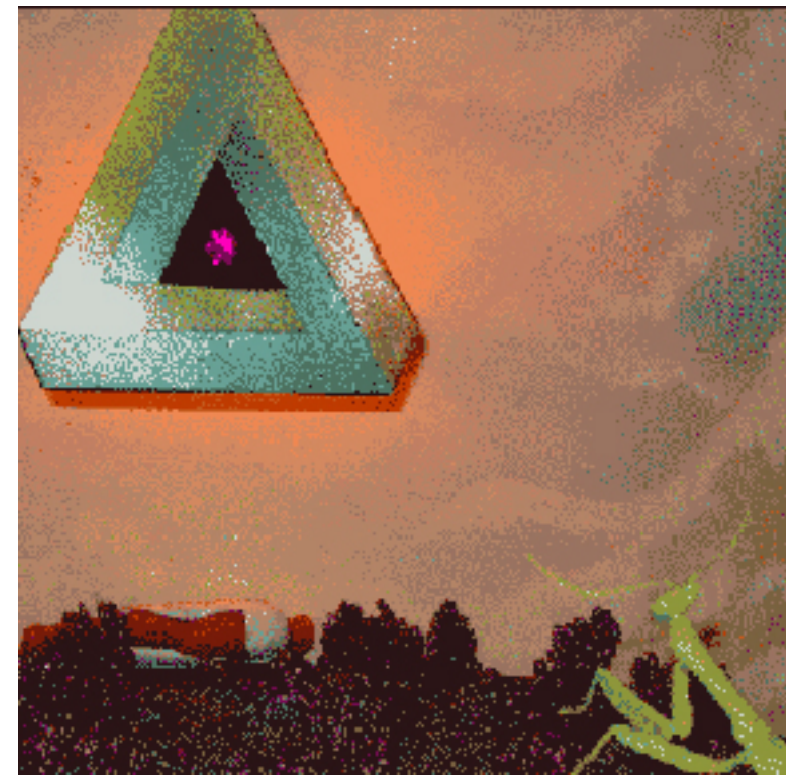
Elyria, circa 2001
My magnum 'opus- the diorama

Driving in Elyria, south of the waterfalls, I happened to notice that it was trash night. As I was accustomed to stuffing my car full of old vacuums, vintage dog sculptures, or the OSCA truck full of couches, *I pulled off into a side street.* There I picked up a nice wooden box, with carved headrest on the front. Inside, when I got back home, was a strange diorama, loaded with meanings. Is this masonic? What does the mantis mean? Not to mention the jewel.

The diorama measures 11"x13"x29", is made out of sound pine, painted and decorated on the inside. Behind the triangular knot symbol is lightings for a painted backdrop of chaotic mist, perhaps on an alien planet? The rocky terrain is *purple*, which may confirm that. There is a praying mantis approaching this "portal to a purple planet". On inspection, the mantis is not half-assed; it is metal and well crafted.

On the front, beneath where you look in, there are two additional lights. They are projected through strange metal "light-tubes" to cast spot-lights directly on the mantis and the center of the triangle knot, on the purple jewel.

Was this made by a highly creative teenager who had dyed hair? Or an old man, looking to illustrate some of the masonic secrets he learned at the Elyria lodge?



I took it apart once. Inside, I was able to confirm there is indeed a real bullet pointed at your forehead, from the top of the proscenium arch. I noted thorough, well-planned, intent-ful construction, but no secrets were to be had, although I could not look beneath the "purple alien landscape stage". This diorama marked the end of my dogged pursuit of *trashfinder* secrets. With it, I could retire, on the realization that *I don't need to find anything else.* Since then, my band, SEJAYNO, has used this image as the cover of a psychedelic mysterium CD called "safario". The diorama still inspires many other theories. There is even speculation that I am lying and I made this myself, and I give you my word as to this fancy: no.